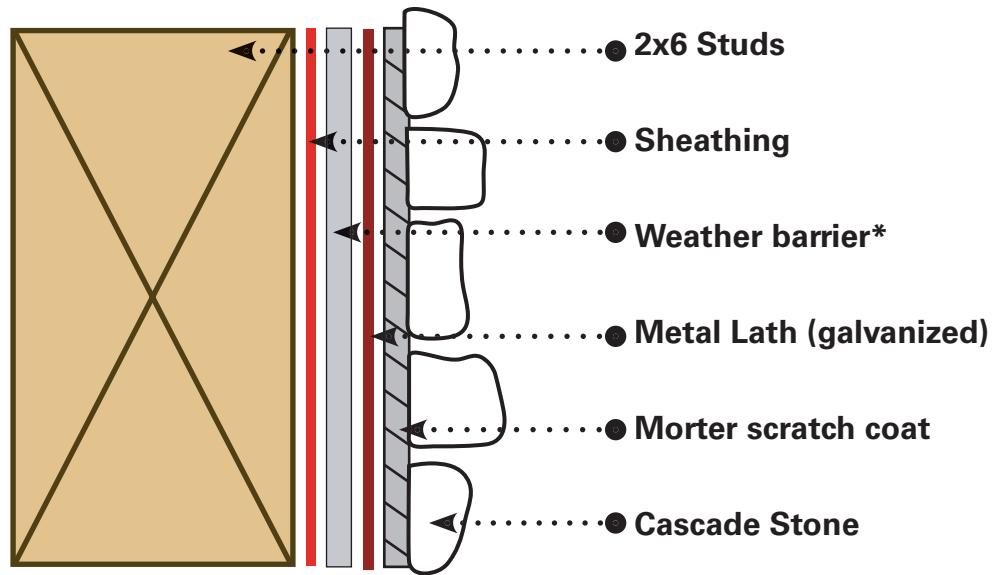


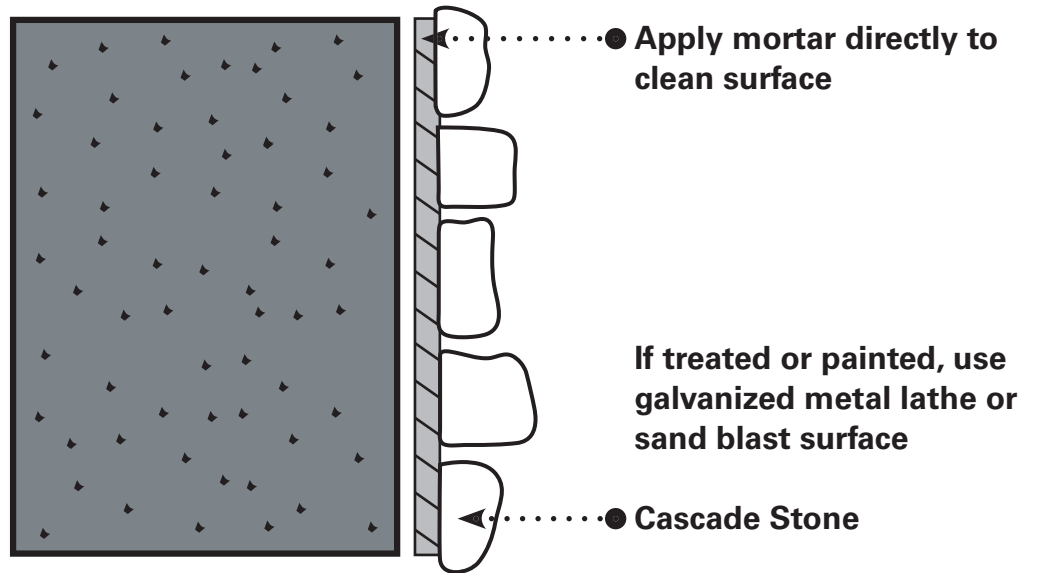
Installation Cross Section

Wood Frame:



*Always check local building codes

Block or masonry:



Cascade Stone installation:

Apply approximately 1/2 inch of mortar on back of stone and set stone on wall with back and forth movement.

Cascade Stone manufactures stones that can be installed one of three ways; grouted, dry stacked or both.

Check with Cascade Stone at the time of purchase for installation instructions that correspond with the type of stone you have selected.



Cascade Stone, Inc.
15 Old Hwy. 8
New Brighton, MN 55112
ph: 651.774.9657
fax: 651.774.1602
info@cascadestone.com